

# GAEA'S OWN

Spring 2015

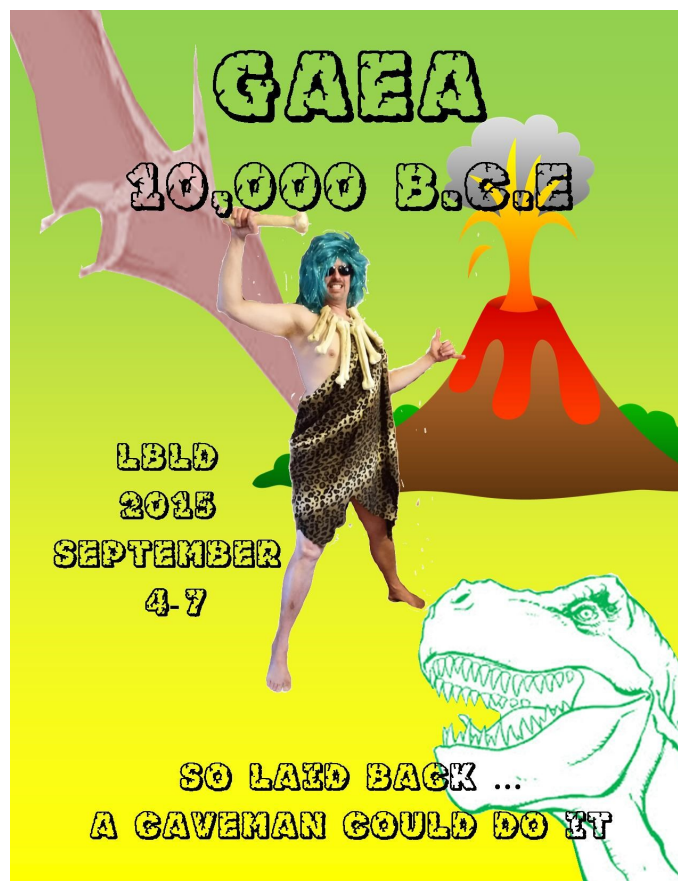


## **A Note from the Board of Directors...**

Due to the fact that there is a competing event on Labor Day weekend with the same Cat in the Hat theme this year, it has been decided to change our theme for LBLD 2015. We know that for many, plans and costumes are already in the works and we apologize. Don't worry though, all is not lost, we will be using the Cat in the Hat theme for the 2016 season.

We hope you will embrace our new Laid Back 2015 theme, GAEA 10,000 B.C.E. This is the festival to drag out your loin cloths and leopard print and have a great time. It's going to be so laid back, even a caveman can do it!

So save the date, and we will see you there!

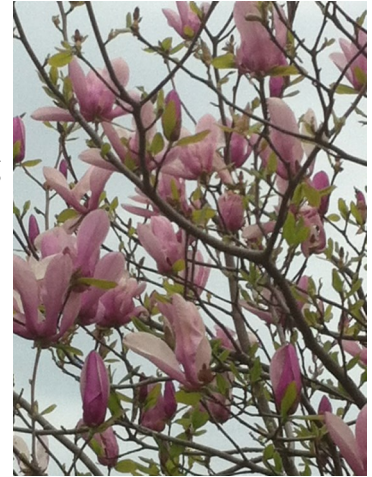




# President's Letter

## *Erin Marshall*

I think we all know what time of year it is....but if you don't I will give you some hints. It is still rather cold out, but has been warming up once in a while. The days are getting longer. The water at camp is still off....but that is not for long. What I am getting at is that winter is coming to an end and spring will soon be upon us and that means EARTH DAY!! If you follow our Facebook page you will have seen posts going up often about the season opening festival. Most importantly is that Registration is open!!! So if you have not registered please head over to our website and do so!! Work



Exchange is a valuable part of our festival. We still have plenty of work exchange spots available. Just as much as we need people to attend the festival, we also really need people to do work exchange. You can send an email to [earthdayworkexchange@campgaea.org](mailto:earthdayworkexchange@campgaea.org) to inquire about work exchange.

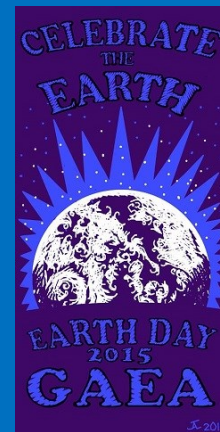
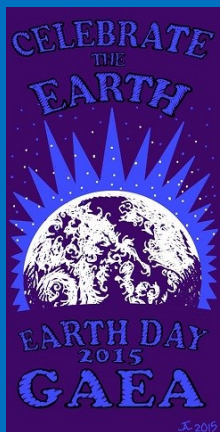
We are also look for anyone that would like to do a workshop for the event. Workshops need to stay within the spectrum of Earth Day related ideas. Past workshops have included Solar Cooking, Plant Walks, Build your own fire starter, Yoga, Worm Farming, to name a few. If you have ideas there is a link on the "Schedule of Events" tab of the Earth Day event page.

There are 2 community potluck dinners, one of Friday night and again on Saturday night. Friday night's dinner is Vegetarian Chili. Saturday night is an Italian theme. We will be making a LARGE amount of spaghetti. Those wishing to participate and eat should volunteer (ahead of time) to bring a certain food item in a sufficient quantity. We will need sauce, pasta, side dishes, desserts, salad, and various other complimentary items. Each meal will only be having the main dish provided, so if you plan on eating we please ask that you bring something to share. Please contact [earthdaymeals@campgaea.org](mailto:earthdaymeals@campgaea.org) for more information on what you can bring to each meal.

Also, don't forget the Reduce/Reuse/Recycle Rummage Sale! Leslie will be organizing all your donations on Friday as they come in to have ready bright and early Saturday morning. (9-ish is early by some peoples standards! lol) So, clean out your closets and book shelves and magical items and donate them to the rummage sale. (yes it is almost spring cleaning time!) This year we will have a \$5 table, a \$2 table and a \$1 table. If you want to donate, please drop your items by the ERI/Rummage Sale tent before dark on Friday if possible! See you all there!

I am ever so proud to introduce our newest board member, Cat Andrews! Cat first stepped foot on Camp Gaea in May of 1992 at the first Heartland held on the land. She attended festivals regularly over the next few years until becoming a cabin sponsor in 1999. She moved from Omaha to the KC area in 2002 in part to be closer to Gaea. Gaea has been her spiritual home for over 20 years. In her private life she is a nurse, has 3 awesome kids and, according to her, a perfect husband (who she met at Gaea).

And finally a notice to the Gaea community, starting with Earth Day, anyone age 18 and over attending any ERI sponsored exclusive event, will be required to show valid photo ID at registration before they will be allowing on property.



## **April 17-19, 2015**

Please join us for the Earth Day celebration at the Gaea Retreat Center. We are very excited about this upcoming celebration. This faire will provide the opportunity to learn about Earth-friendly practices and products. Come learn about ways to be earth friendly!

We will learn about materials, products and methods that treat Mother Earth with the gentle touch and respect that she deserves.

Registration for this event is \$20 per adult for the entire weekend.  
(+\$10 for Cabin space)

Hope to see you there!!

**ALL WORK EXCHANGE must contact [earthdayworkexchange@campgaea.org](mailto:earthdayworkexchange@campgaea.org) to receive work exchange registration code.**

### **SCHEDULED EVENTS Include:**

[Click here for complete details!](#)

- Friday 6:30 to 8:30 PM - Vegetarian Chili
- Friday 9:00 PM - Fire, Drumming and Dancing
- Saturday 9:00 AM to 5:00 PM-Reduce/Reuse/recycle Rummage Sale
- Saturday 12:00 AM to 8:00 PM - Annual Earth Day Art Show & Community Art Project
- Saturday 6:30 to 8:30 PM - Annual Earth Day Community Meal
- Saturday 9:00 PM - Fire, Drumming and Dancing

# Caretakers' Corner

Clint and Rhi Koetting

Spring 2015

It's finally spring! On our latest walk-about we noticed the flora and fauna of camp – and they sense the wheel turning too.

There are buds on the magnolia tree in Flora's garden and violets are shooting their leaves up through the leaves in the woods. The red-tailed hawks are pairing up and the bees are out. These are all indicators that warmer weather is on its way.



With the warmer weather come work weekends. We have several set up and several projects slated for them and camp would love your help. Painting cabins and clearing grown-over campsites top the list. Dust off your work gloves folks, it is time to get camp ready to go for Earth Day and a busy season! You can keep up with what is currently happening by following us on camp's Facebook page or following us on Twitter at @GaeaCaretaker.

Don't forget, spring is a wonderful time for hikes and day trips and we hope to see you out. The water will be turned on and ice will be delivered the first weekend in April. Who's ready for coffee in the picnic shelter? It's coming soon!

## **Spring Work Weekends**

March	14 & 15 21 & 22
-------	--------------------

April	4 & 5 11 & 12
-------	------------------

May	2 & 3 16 & 17
-----	------------------



# EARTH DAY 2015

## ART SHOW



**Main Hall**

**Saturday 12:00-8:00**

**All you talented artists, come share your gifts at the Earth Day Art Show.**

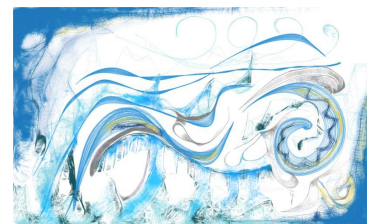
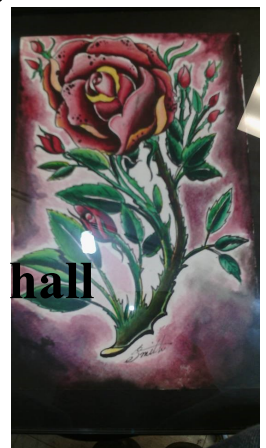
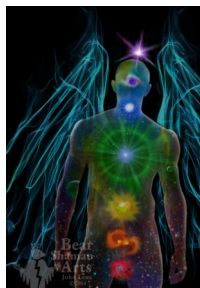
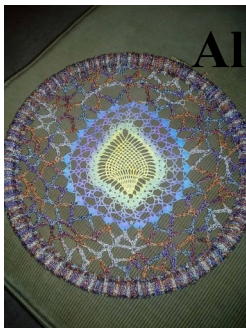


**Show is open to all artists, all mediums, paintings, works on paper, sculpture, jewelry etc. Subjects to include but not limited to works celebrating The Earth, Camp Gaea, your world, your spirit your creativity! There will be works for sale with percentages to go to camp and works for just viewing.**



**Come view the show from 12:00-8:00**

**All artists works to be dropped off at the main hall before 10:00 am Saturday!**



## Earth Rising, Inc. Intern Program

The Earth Rising, Inc. board has decided to implement a program that is designed to encourage active participation in the running of Camp Gaea.

The Earth Rising, Inc. board is committed to providing a clear and concise list of expectations which will allow a person who is interested in the intern program to understand what is expected of them, and how they might have the opportunity to become a voting member.

Being part of the intern program is not a guarantee of board membership, however, any future board member will be expected to have been an intern for a period not less than 6 months, or to have previously served on the Earth Rising, Inc. Board of Directors for a term not less than 6 months.

An intern should be willing to commit themselves to:

**Be a self starter.** Take on a project and stay with it. Identify areas that need help and develop a plan to improve it. Either create a project, or work with the board to identify what needs to be done.

**Attend all meetings.** While exceptions will occur, an intern needs to make ERI meetings a priority. Being part of the decision making process is one of the primary responsibilities associated with being a board member.

**Be the example and not the exception.** Setting an example is one of the most effective ways to communicate with people who are camping at Gaea.

**Show good faith** in resolving personal issues that might arise during the normal course of board business.

**Take the time** to connect with other board members and stay abreast of the issues at hand. It will be the responsibility of an intern to stay in the loop.

**Show** that consideration of the overall well being of the camp is your first concern when new policies are being debated. Working with Earth Rising, Inc. is not the same as being an advocate for a special event or one of the Exclusive Rental groups.

**Exhibit objectivity** when making decisions.

This outline is designed to assist an intern in their efforts to work with the board. It is not meant to discourage people from becoming involved if they aren't willing to donate as much time as would be required for an intern; rather it is meant to help a person understand the level of commitment that is required to sit on the board of Earth Rising.

After a period of 6 months as an intern, that individual may apply for a position on the board if an opening exists or they may continue on as an intern and apply when an opening becomes available if they so choose.

# Treasurer's Report

*JD Besares*



It's almost here! Spring is just around the corner and we've about weathered another winter. For winter planning the board discussed projects and priorities. After a careful review of our operating budget, we decided that the first course of action would be to purchase a reliable vehicle. A good portion of the work that needs to be completed at camp this season involves procuring supplies, delivering our equipment for service as well as numerous projects on the land. Thank you to Clint for taking on the arduous duty of haggling for a truck!

Purchasing assets like this would not be possible without your donations. Speaking of, I would like to send out a special thank you to MMNG for their generous end of year donation. This gave us a great head start to spring.

Did you know you can use PayPal for re-occurring donations to camp? Check out our donation page for more info:

<http://www.campgaea.org/forums/payments.php>.

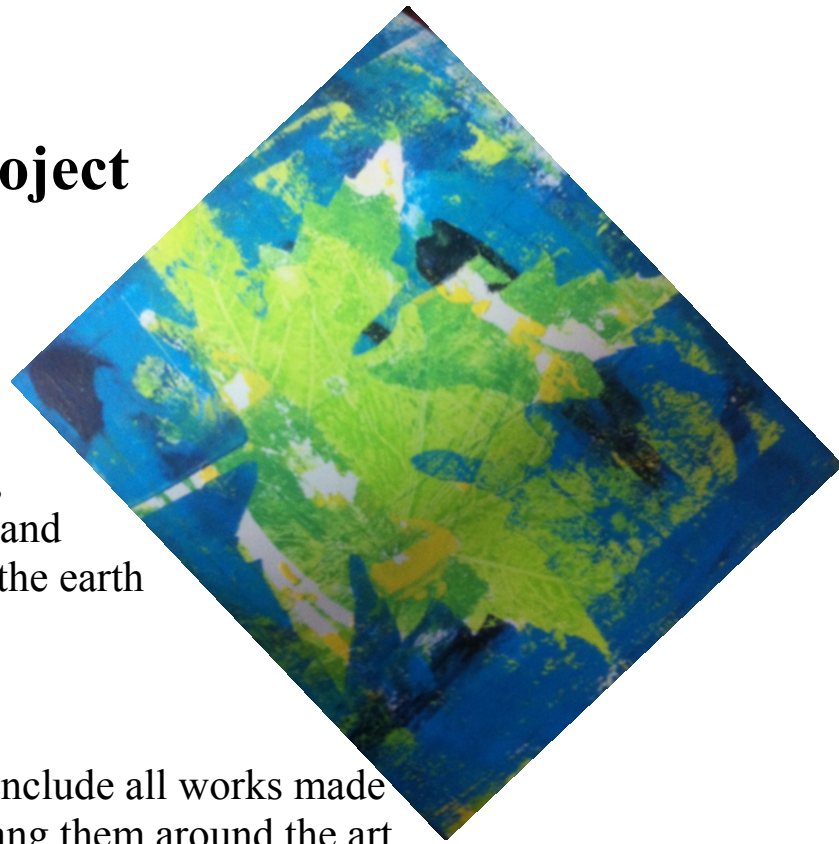
If you are interested in making a onetime donation, use the yellow *DONATE* button on the left side of the page.

***“May many hearts burn with the desire to see Gaea receive the care she needs and many blessings upon those who give to her in this spirit.”***



# **Earth Day Community Art Project 12:00-5:00 Main Hall**

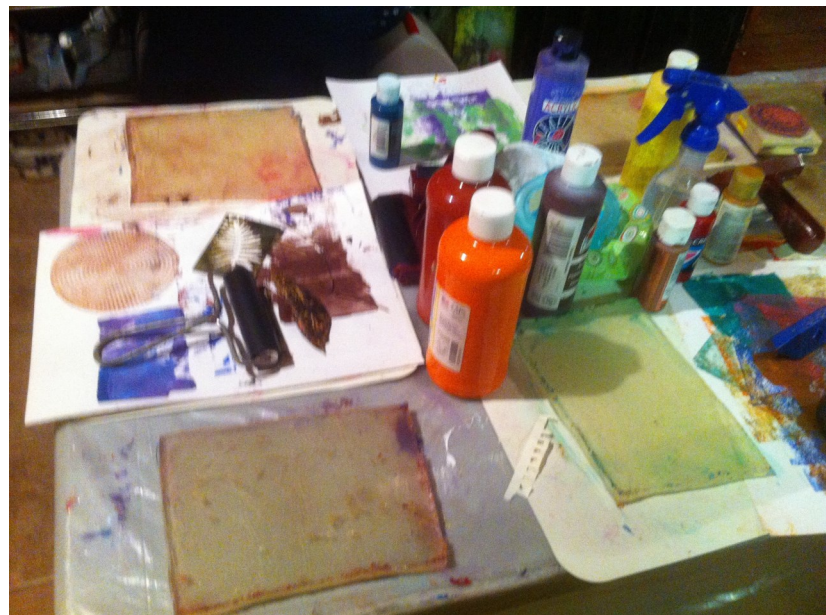
We will be doing Gellie Prints this year. We will use dried plants, leaves and things from the woods and camp to make prints celebrating the earth and our community!



Will include all works made and hang them around the art show!



**Gellie Printing: A fun, easy, fast, colorful way to make prints!**



## Park and Walk: Help keep Gaea beautiful

I'd like to take a moment to address the issue of driving and parking at camp. It is important that we try to keep driving to a minimum while on property. There are several reasons for this.

To begin with, it is in our mission statement that we support ecologically sound practices. It may be easier to drive down the hill to go to the shower or the lake, but is it better for the environment? Of course it is not. It is also mentioned in the respect agreement. "Please restrict driving-park, walk, exercise and enjoy the land."

Excess driving also damages our roads. Every year, monies must be budgeted to care for the roads and repair damage that occurs throughout the season. The less we drive the less damage we cause. That leaves more money for other projects that we would all like to see accomplished.

Additionally, driving more than is really necessary creates traffic and parking difficulties. Besides the obvious difficulties resulting from the two way traffic on such a narrow road, our smaller parking areas become congested when people drive to shower or get ice. These areas are really only intended for limited and short term parking.

Of course there are exceptions for those with mobility issues. For the rest of us, being at camp is a wonderful opportunity to get some exercise and enjoy the natural surroundings. Let's leave the cars parked and help keep Gaea beautiful!



## **Will The Circle Be Unbroken?"**

By Cecilia Jones

"Will the circle be unbroken, by and by..." This is an old Christian hymn but the question fits the topic which is ritual etiquette.

Most Rites and Rituals are performed with people standing in a circle and for good reason: the energy flows more easily. It also speaks to there being no hierarchy among those participating. Sharing of the energy and experience is equal for all in the circle. The Presenter of the Rite can see each individual, connect with each person. In turn, those in circle can see and connect with the Presenter. It enables energy to build, connect, and imbue everyone with the purpose of the Rite. The focus is on the Intent with little to no distractions.

Unfortunately, in recent years, I have witnessed a trend in public Rites that disrupts this flow.

When coming to ritual, one should already begin trying to open the self to experience what is about to occur. It means showing due respect for those presenting. Standing in front of a crowd, especially when you don't know everyone present, is daunting. When people stand around talking and not giving attention to the speaker, it is disrespectful. Presenters work long and hard on writing and putting together these public Rites. So much energy, thought, time, and even money, goes into it. Please give them your attention! It means a greater, richer experience for everyone.

I have witnessed people smoking and drinking, being inebriated, et cetera during circle. People also bring all their stuff up so that they can enjoy the drumming and fires afterward, which is understandable. I am not saying that a water bottle or soda is out of the question but let's try and keep things to a minimum. Sometimes movement is required during a Rite and all your gear for the night is a tripping hazard. If you need to bring up chairs, coolers, and such, make sure that these are set far enough outside the circle area that they don't create a danger or distraction.

Another thing I have witnessed is people showing up with lawn chairs, plopping down with their drinks, like they are about to watch a fireworks display at a park. This is NOT the time for such behavior! As I stated above, Presenters put a lot into these rites and really want people to be active and participate, to share the energy and experience. This is not dinner theatre and It should not be treated as such. It is fully understandable to expect there will be those who wish to observe only, especially if they are unsure about what goes on in a Rite. Please just be respectful and stay far enough back that you do not interfere with the energy and concentration needed to truly perform the intent. Please remember to keep all noises to a minimum. Many presenters are trying to invoke the spirit of the deity being honored, the energy of the season or element, the connection with ancestors, et cetera. It is not easy work to create a circle, it requires focus and participation!

One should also show up on time. Of course, there are times when that is impossible but then you should come quietly up to circle and enter, if it is allowed. Many Presenters cast their circles with a Doorway that is meant to allow those who need to move out or in to do so by permission of the Presenter without disrupting the circle. This may sound arbitrary and bossy but Presenters work very hard to pull energies together and running in and out breaks the flow. Others leave it flexible but it doesn't mean to come up and in while being noisy and unfocused. Again, all about respecting those in circle.



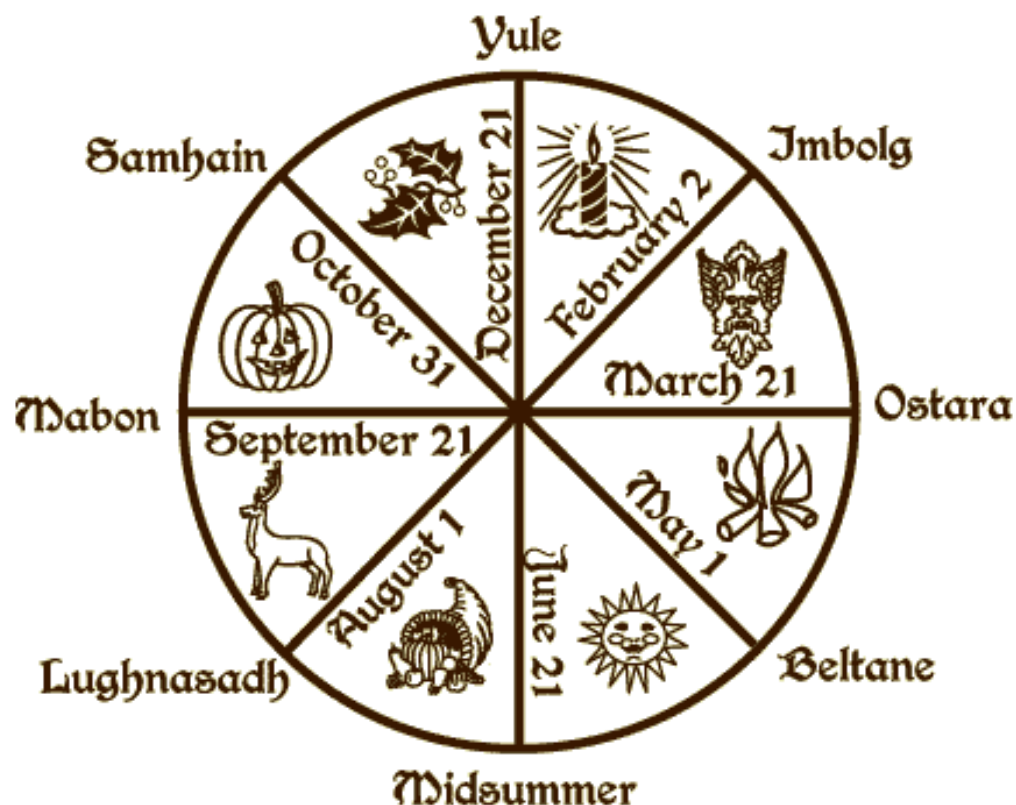
People that NEED to sit down, the Elderly, those with infirmities that prevent standing, pregnant women, should be accommodated. We should remember to respect those with special needs, that is a given but I pointed it out anyway!

This all may sound a little preachy, fussy, or whatever word you chose, but this is meant to enhance the Rite experience for all. When the intent, energy, and focus flow, when the connections to Spirit and humans is made, it is an awesome and beautiful thing! Let's all work together to create it.

Blessed Be.



Our rituals are open to the public and celebrate the pagan wheel of the year. Rituals at Gaea are opportunity to bond as a community and perhaps learn something in the process. We welcome all pagan traditions to officiate. If you would be interested in facilitating a ritual, please call Rhi at camp (913-796-2141) to discuss putting you on the schedule.



## Upcoming Rituals

**Ostara Ritual –March 21. 2015**

**Beltane Ritual –April 25, 2015**

# **The Meaning of Ostara**

*by Leslie Fox*

Ostara, the spring equinox, is one of my favorite times of the year. Scientifically speaking the day and the night are in perfect balance. The days will continue to grow longer until the summer solstice, and the days will be longer than the nights until the fall equinox.

Winter can be incredibly beautiful. I love hot tomato soup and grilled cheese by the gas fireplace. I love moonlit snowball fights with my family when the whole world seems a crystalline dream. I love long books late into the night with my little one tucked under my arm. Our great mother, the Earth, needs her rest, and maybe so do I. But the dark half of the year can also be very isolating and a bit disorienting. Cabin fever becomes problematic, and I am relieved by the coming of spring.

Symbolically and realistically spring is a time of deep magic and joy. Warmed by the growing strength and love of the lord our Sun, our great mother the Earth resurrects. From her deep winter sleep she bursts forth from the ground, from the womb, from the shell. The quiet darkness of winter gives way to baby animals and flowers. At this time I take my little one to visit the baby chicks and bunnies at the feed store, and I really start to get my garden underway.

However, the Earth does not awaken quietly. As the cold air of winter is replaced by the hot air of summer the powerful spring storms will begin. A battle in the sky and on the ground. I check to make sure my weather radio is in good working order and that a shelter is near. In the central plains floods, lightning damage, and tornadoes can leave behind them great destruction and sorrow. Nature is both beautiful and dangerous, to be both loved and respected.

My spirit awakens with the spring. I am amazed. The Earth fills me with awe, and I too resurrect anew. My lord the Sun will continue to grow stronger. I love to feel his light warm on my skin. And my lady the Earth will grow ever more beautiful. In the woods or by a lake I love to hear her singing. Take a walk this spring and see her fresh young beauty. Fertility and the magic of life is evident where ever you look.

~Leslie

Join us in our celebration of Ostara and the spring equinox and potluck feast!

Saturday, March 21<sup>st</sup>, at 7:00 p.m. (potluck feast to follow)  
Presented By Leslie Fox



## Rules for Pets at Camp:

- 1) All dogs **MUST** be on a leash, **AND** under your control. This means the leash is in your hand.
  - A. Although you believe your animal will never harm someone, you cannot predict every situation.
  - B. You don't know how another animal, or another person, may react to your animal running up to them.
  - C. Dogs are **NOT** allowed in the Dining Hall or Bath House.
  - D. You **MUST** clean up after your dog when it makes messes (i.e. poop).
- 2) Do **NOT** feed any animals that you do not own. This refers to wild, stray and domestic animals.
  - A. Feeding the wild animals encourages them to come into people's camps and steal food; this is dangerous as this can also provoke a wild animal to attack.
  - B. Feeding strays encourages them to come back to camp, and to enter people's camps and steal food. We do not want to encourage strays to stay on the land.
  - C. Feeding domestic animals that you don't own may cause problems with that animal. You do not know if that animal may have a food issue, or is food aggressive.



# GAEA

## 10,000 B.C.E

LBLD

2015

SEPTEMBER

4-7

SO LAID BACK ...

A CAVEMAN COULD DO IT





## Spring Events



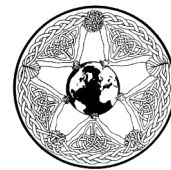
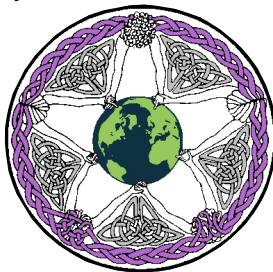
ERI Board Meeting	March 1	Public Event
Work Weekend	March 14-15	Public Event
Work Weekend	March 21-22	Public Event
Ostara Ritual	March 21	Public Event
Work Weekend	April 4-5	Public Event
ERI Board meeting	April 5	Public Event
Work Weekend	April 11-12	Public Event
Earth Day Celebration	April 17-19	Exclusive Event
Beltane Ritual	April 25	Public Event
Work Weekend	May 2-3	Public Event
ERI Board meeting	May 3	Public Event
Work Weekend	May 16-17	Public Event
Heartland Pagan Festival	May 21-25	Exclusive Event

Earth Rising Inc. Board Meetings begin at noon on the following dates:  
March 1, April 5, May 3

Most Cabin Sponsor meetings will be on the Sunday after the Public Ritual at Gaea.  
March 22, April 26

Please visit <http://calendar.campgaea.org> to ensure there have  
not been changes to this list!

Work weekends are a good opportunity to give back to Gaea, and earn some Gaea  
Bucks too! Check our [Announcements forum](#) or our [facebook page](#) for more  
information on projects as it becomes available.





*RESPECT YOURSELF*

*RESPECT OTHERS*

*RESPECT THE LAND*

## *Mission of Earth Rising Inc*

The Mission of Earth Rising is to provide a recreational retreat center in a natural setting for the purpose of cultural and spiritual education.

This Mission will be met through the achievement of certain goals.

These goals are:

To encourage the free exchange of ideas, views and experiences.  
To promote greater understanding and respect between groups and individuals.

To support ecologically sound practices and land and wildlife conservation in the belief that the Earth and all life are interrelated and interdependent, and that respect for all life is a Universal Mandate.

To provide sanctuary to people who have experienced oppression or discrimination due to their cultural or spiritual practices.

### **For More Details:**

Earth Rising, Inc. –  
<http://eri.campgaea.org>

Cabin Sponsorship Program –  
<http://cs.campgaea.org>

Calendar –  
<http://calendar.campgaea.org>

Donations –  
<http://donations.campgaea.org>

Contact Us –  
<http://contact.campgaea.org>

